

Diagnosis and Solution for High-Speed Turboexpander Thrust Loading Issue

Mohamed El-Abyouki
Abu Dhabi Gas Industries Ltd (GASCO) - Abu Dhabi, UAE

and

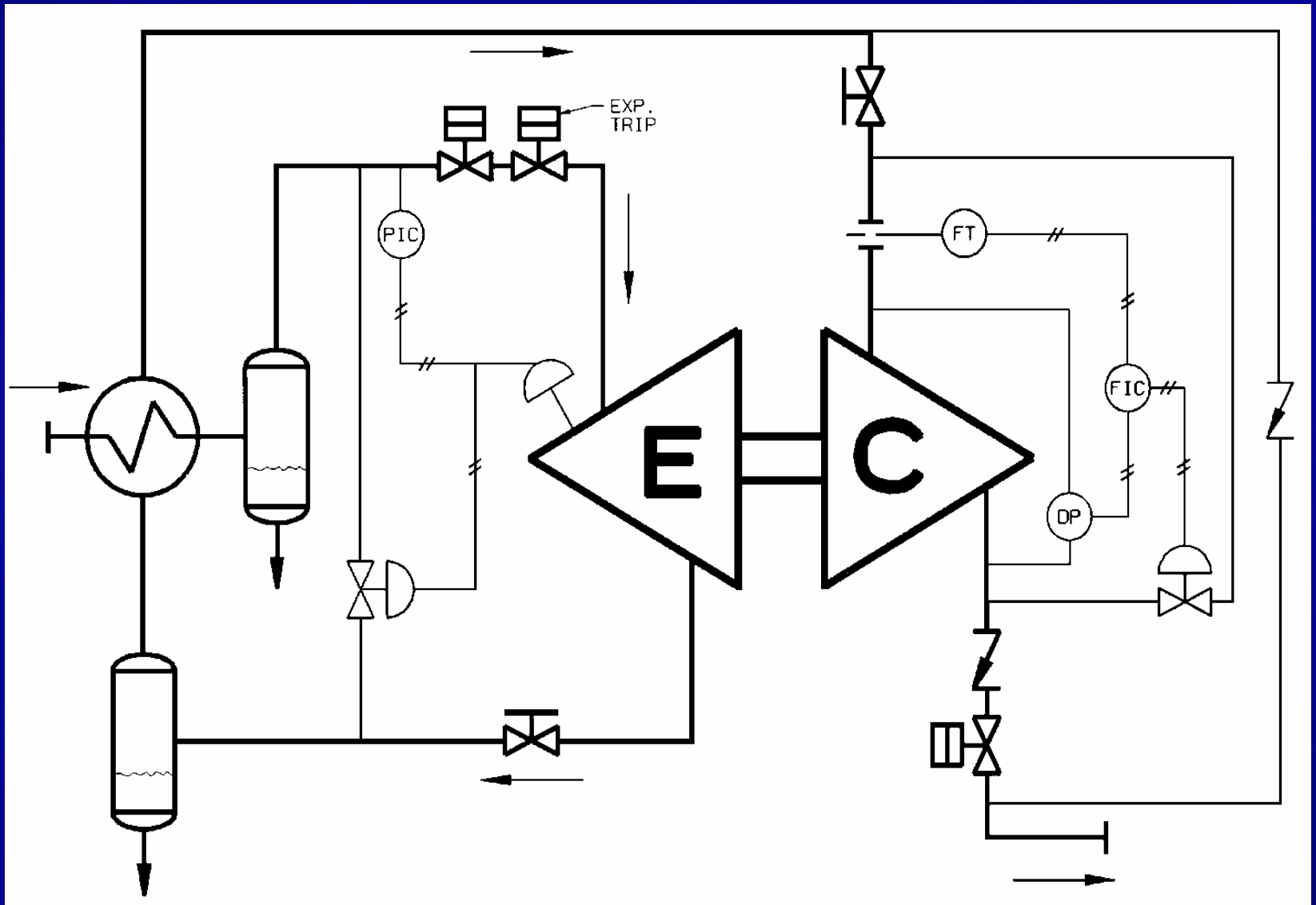
Armando Guerrero
Atlas Copco Mafi-Trench Company LLC - California, USA

1st Middle East Turbomachinery Symposium

Roadmap

- ◇ **Background**
- ◇ **Problem Identification**
- ◇ **Analysis**
- ◇ **Scope**
- ◇ **Testing**
- ◇ **Conclusions**

Bab Turboexpander Plant



Plant Visit 2007

- ◆ **Plant Personnel described problem during vendor site visit in 2007**
- ◆ **High Compressor Thrust**
- ◆ **Thrust Balancer Full Open**
- ◆ **Operation Limited**

History of Bab Plant Turboexpander

- ◆ **1991 re-rate for higher capacity**
- ◆ **Re-rate not factory tested**
- ◆ **At commissioning, high compressor thrust observed**
- ◆ **Flow bypassed to allow unit operation within thrust limits**

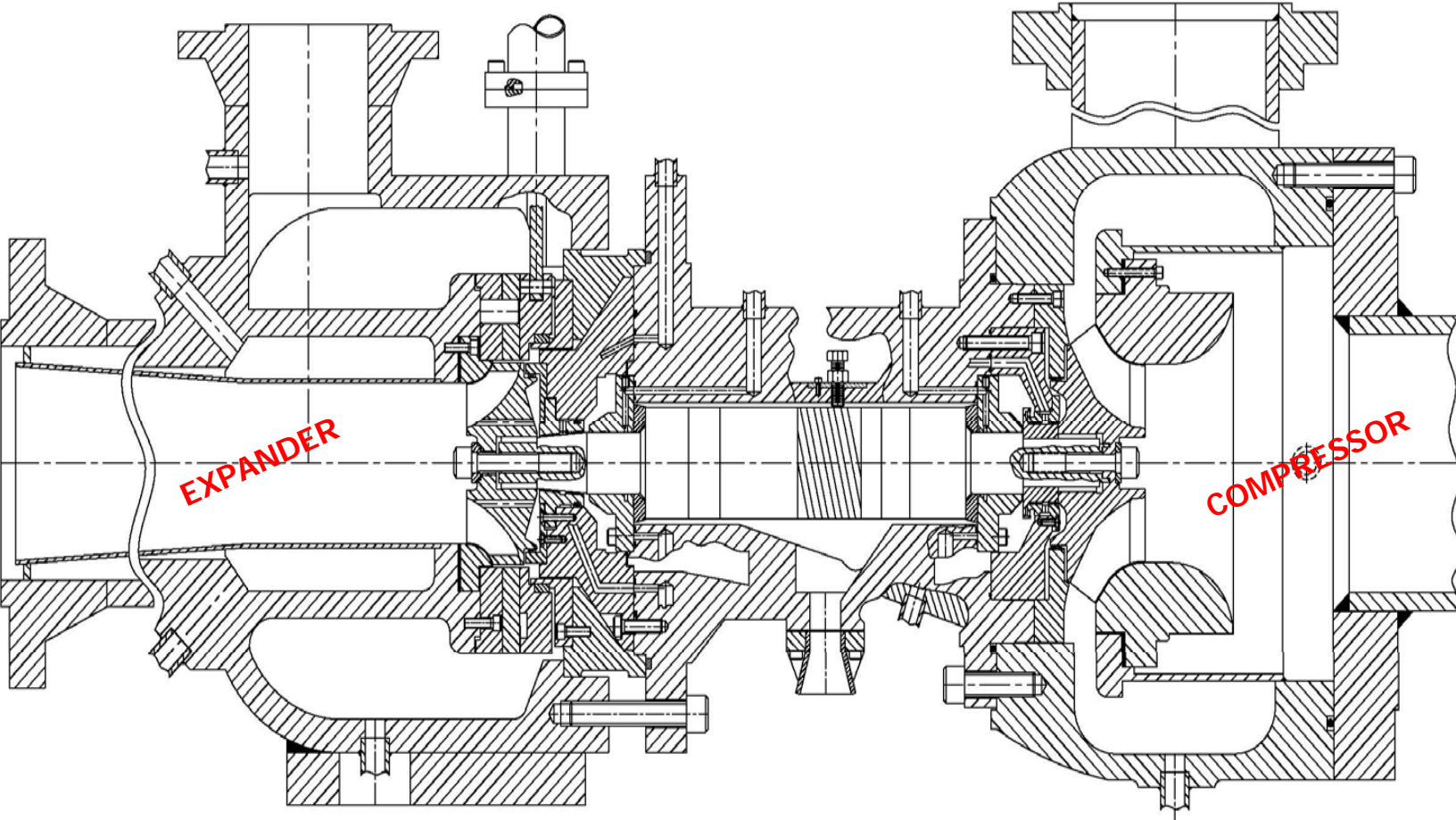
Bab Plant



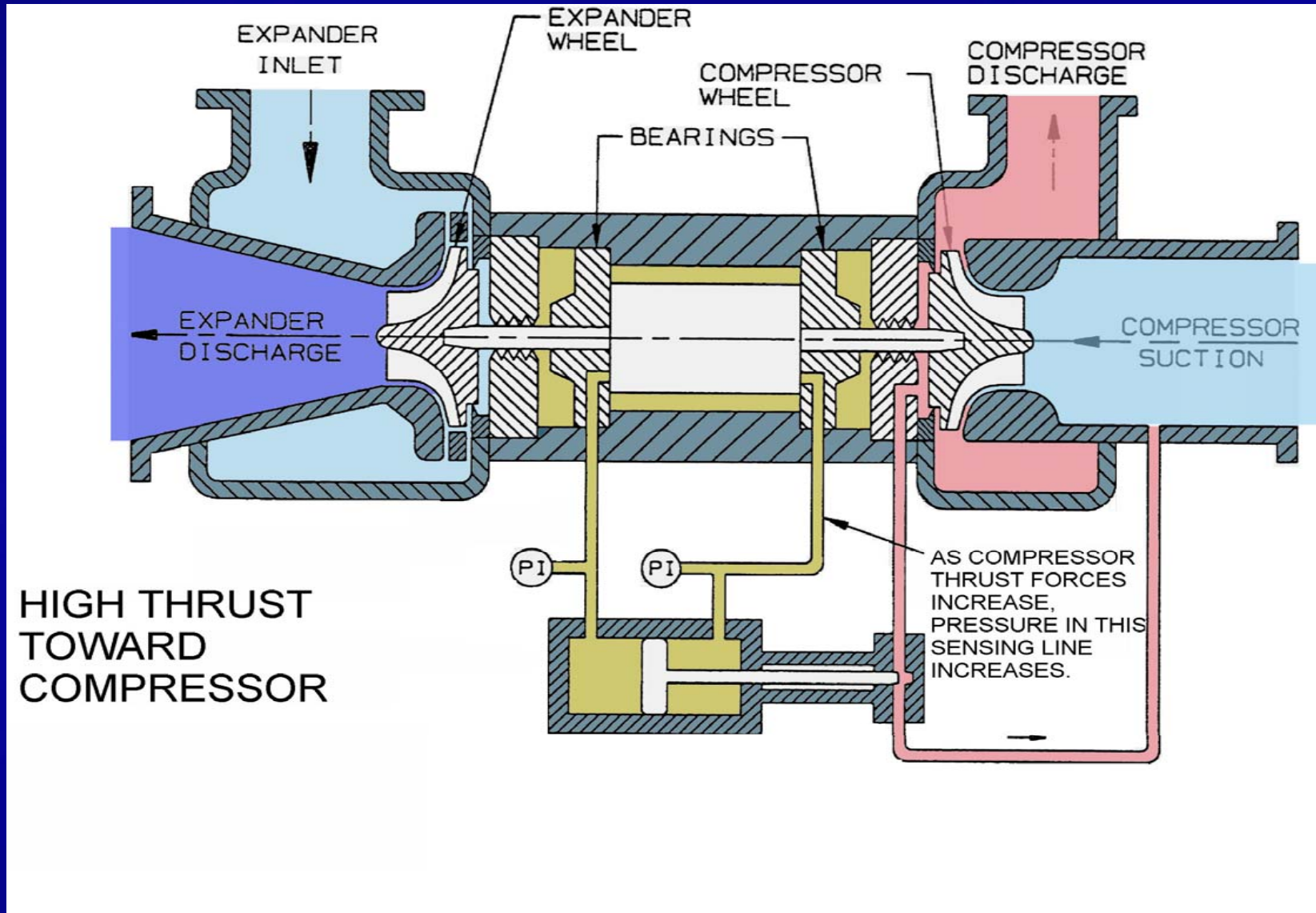
Turboexpander Data

- ◇ **Speed:** Design Speed = 24,000 RPM
- ◇ **Power:** Rated = 1,595 kW
- ◇ **Pressure:** Expander = 44 barg; 17 barg
- ◇ **Temperature:** Expander = -50.3 C; -83.9 C
- ◇ **Flow:** Expander = 105,674 Kg/Hr
- ◇ **Gas Handled:** Natural Gas = 17.5 Mol. Wt.
- ◇ **Manufactured:** 1979; re-rated in 1991

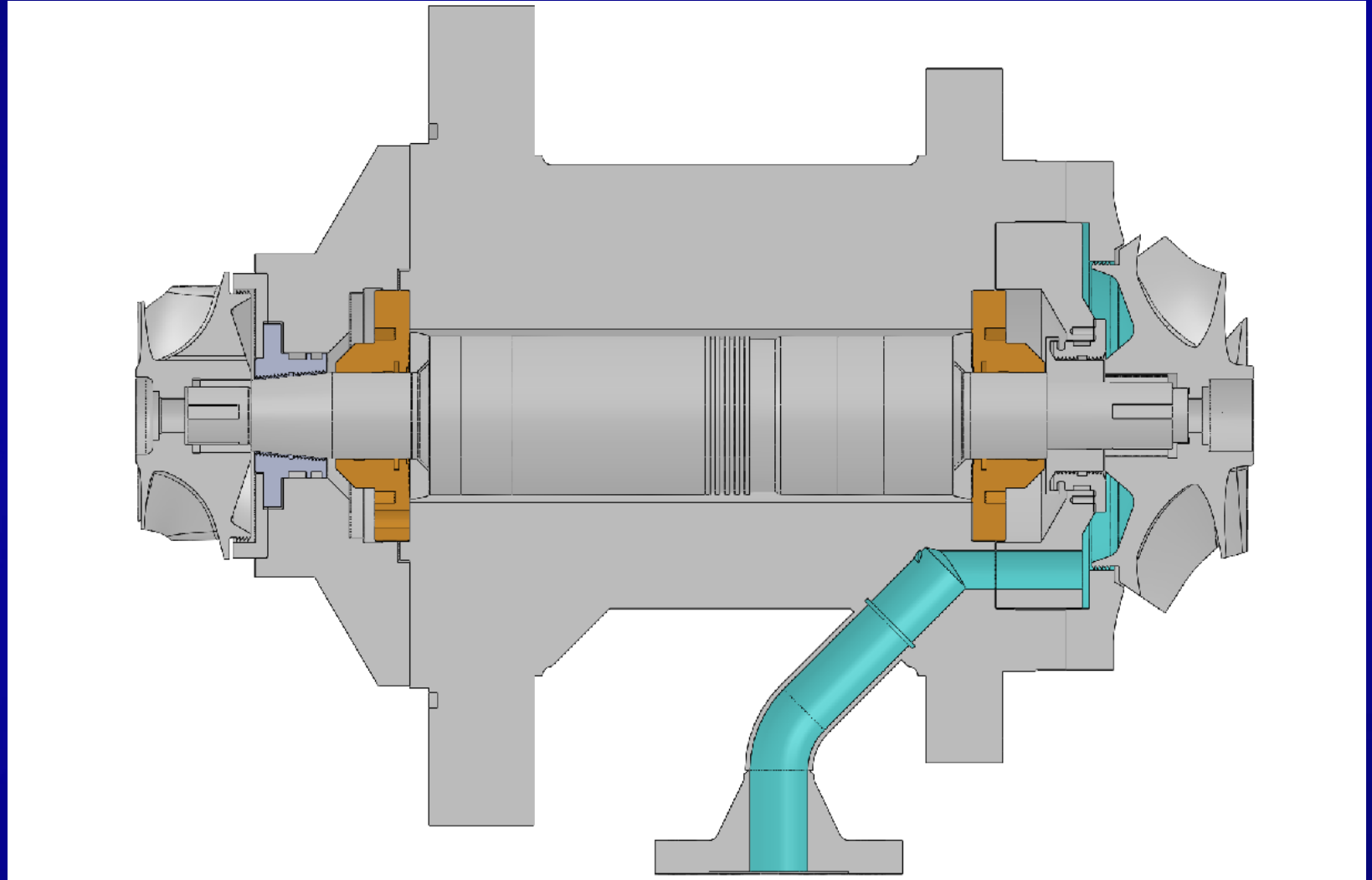
Turboexpander Layout



Automatic Thrust Balancer (ATB)

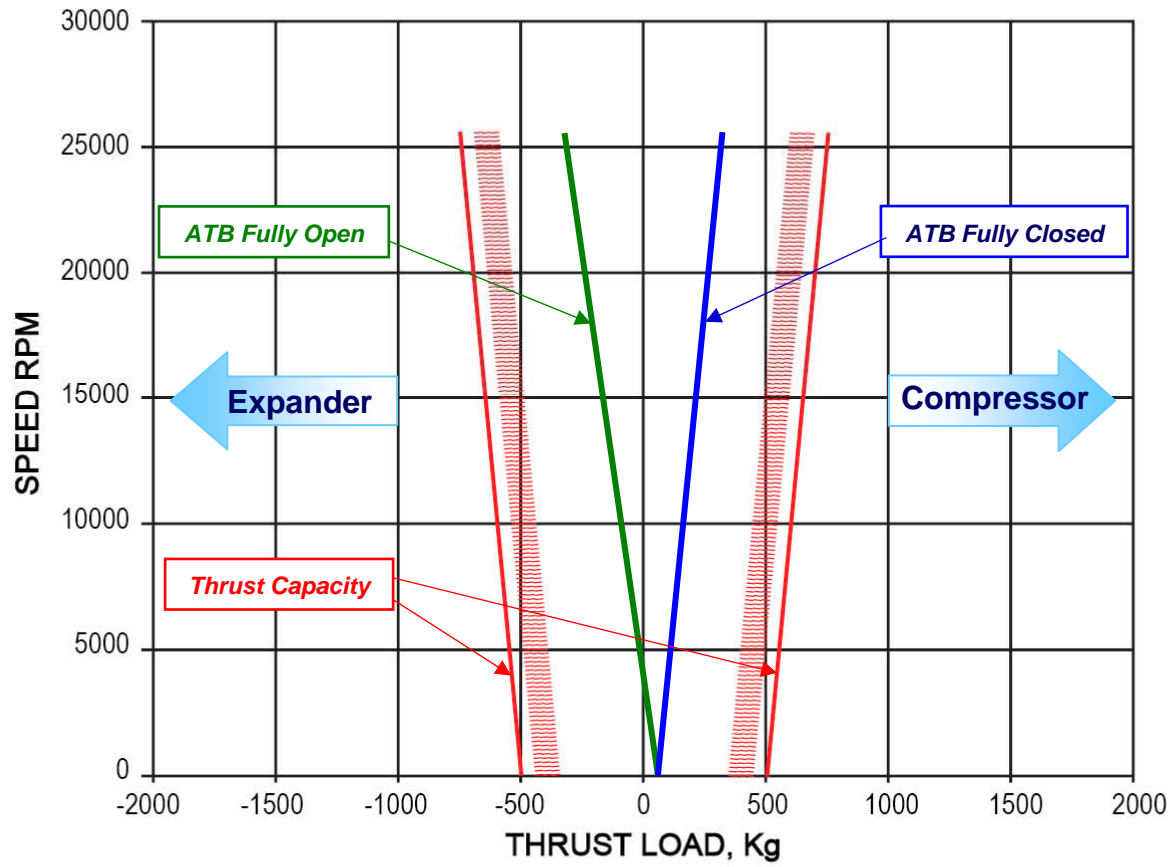


Thrust Venting Port



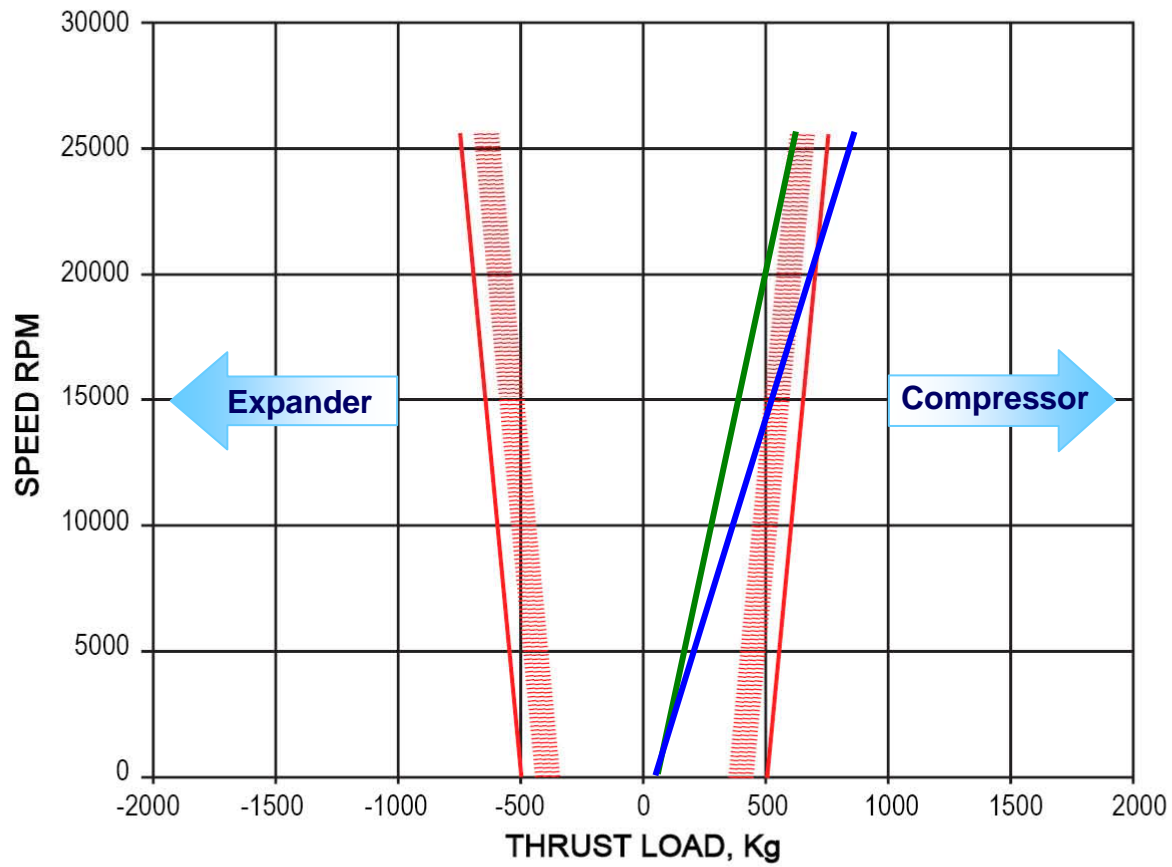
Ideal

Bab Plant - Thrust Load Map



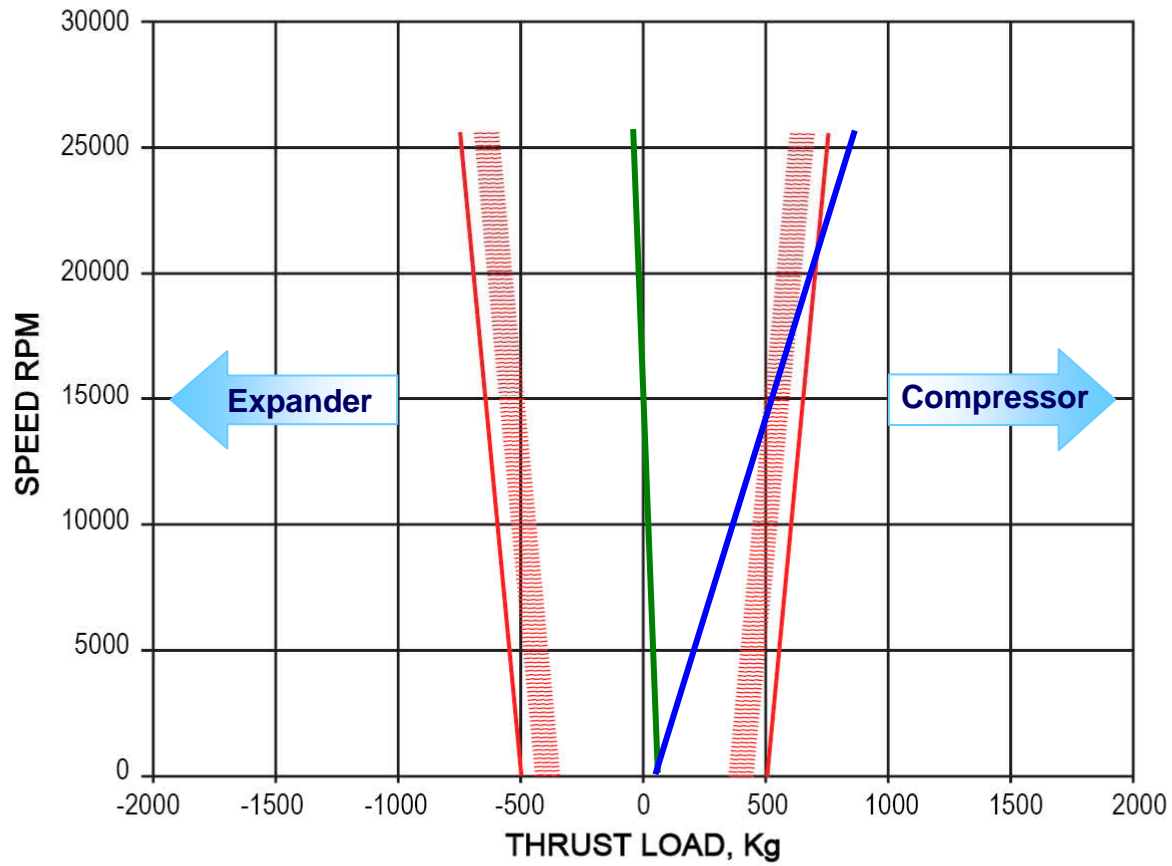
1991 Design Observed

Bab Plant - Thrust Load Map



2008 Upgrade (expected)

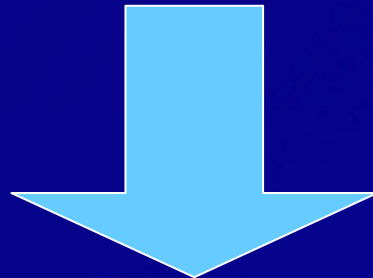
Bab Plant - Thrust Load Map



Scope of Upgrade

Evaluation of Most Economical Solution

- ◇ **Consider New Expander Wheel and Seal**
- ◇ **Consider New Compressor Wheel and Seal**
- ◇ **Consider New Expander AND Compressor Wheels/Seals**

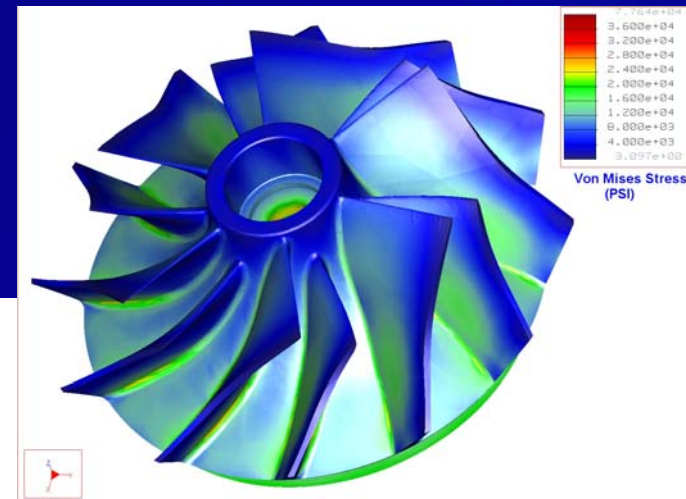


- ◇ **New Compressor Wheel and Seal**

New Compressor Wheel

Reverse Engineering

- ◆ 3D blading digitized from original cast wheel
- ◆ Solid model created for analysis



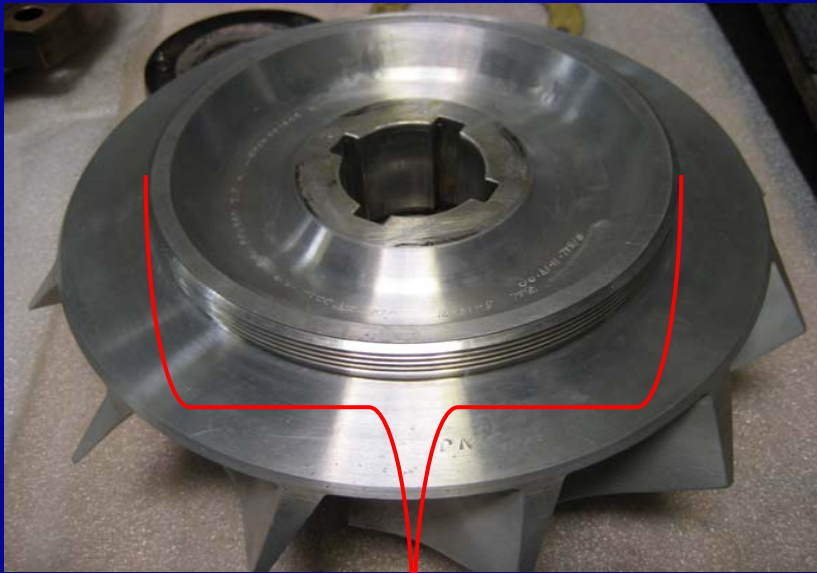
New Compressor Wheel

CNC Milled from Solid Forging

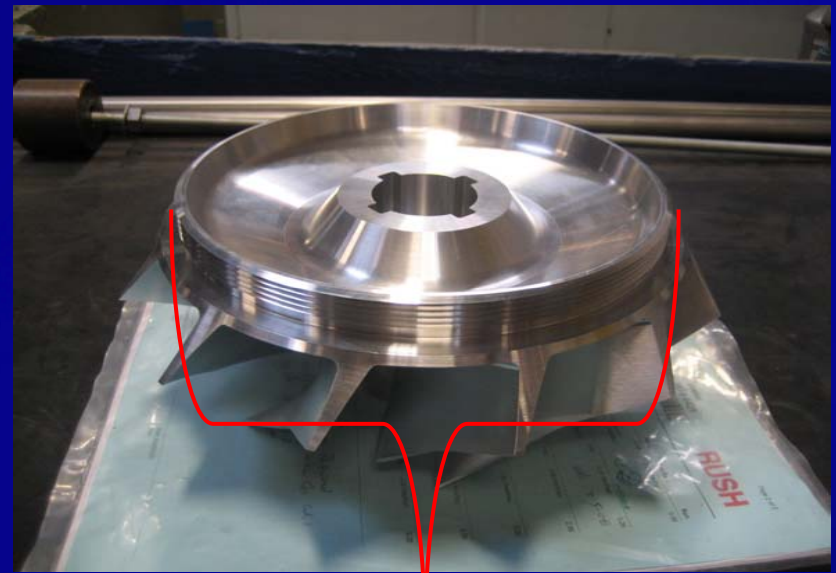


New Compressor Wheel

Larger Seal Area



Old = 6.25 Inch

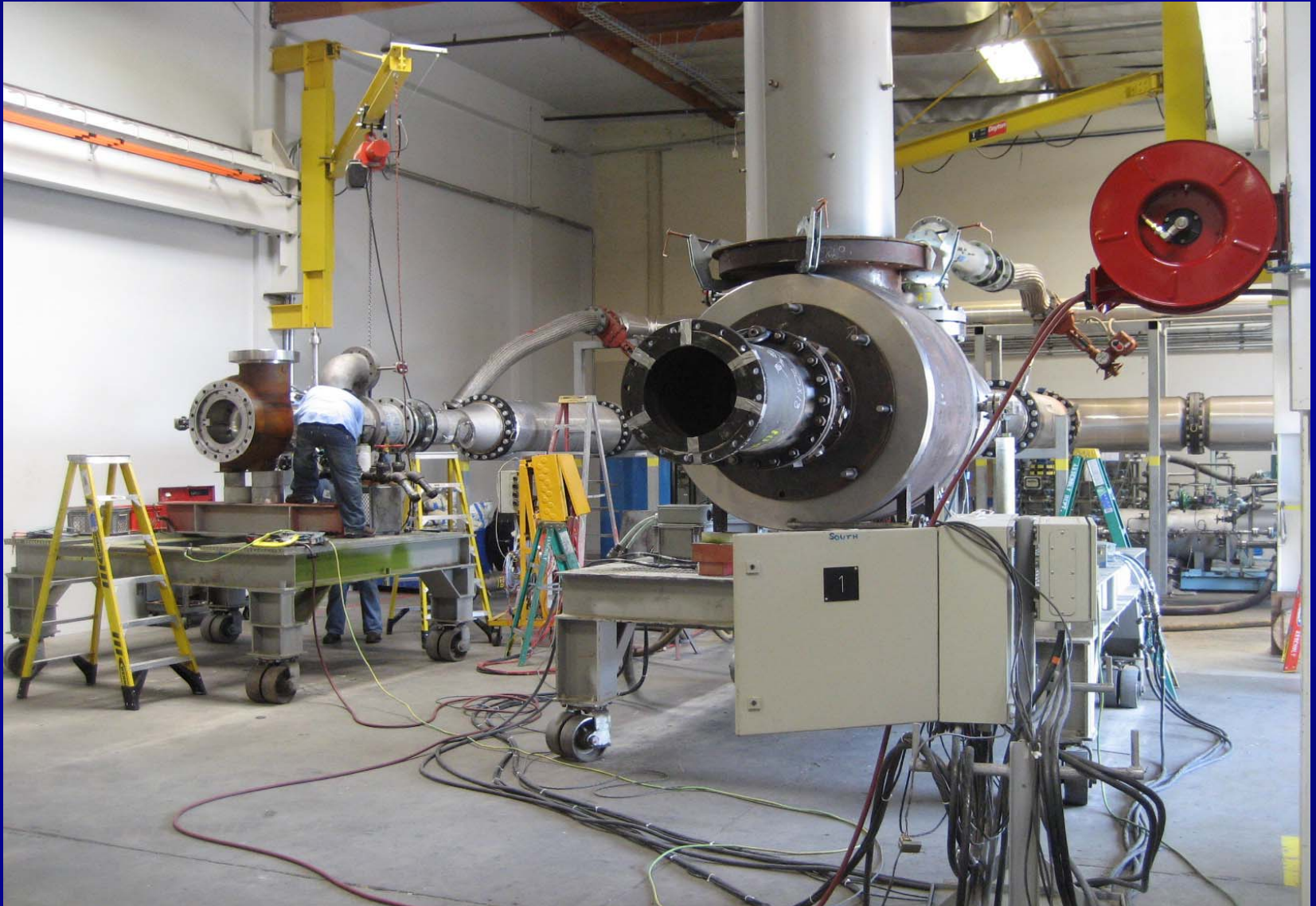


New = 8.0 Inch

Refurbished ATB Assembly



Full Speed Factory Test



Results

- ◆ **Factory test confirmed successful modification**
- ◆ **Turboexpander restarted in December 2008**
- ◆ **Thrust levels reduced as predicted**
- ◆ **Unit now capable of full speed operation**



Conclusions

- ◆ **Old problems warrant periodic investigation**
- ◆ **Large gains possible from small investments**
- ◆ **Factory testing reduces risk on upgrades**

Thank You